



GAT MONTHLY MEMBERSHIP PROGRESS REPORT

Results as of: 12/31/2022

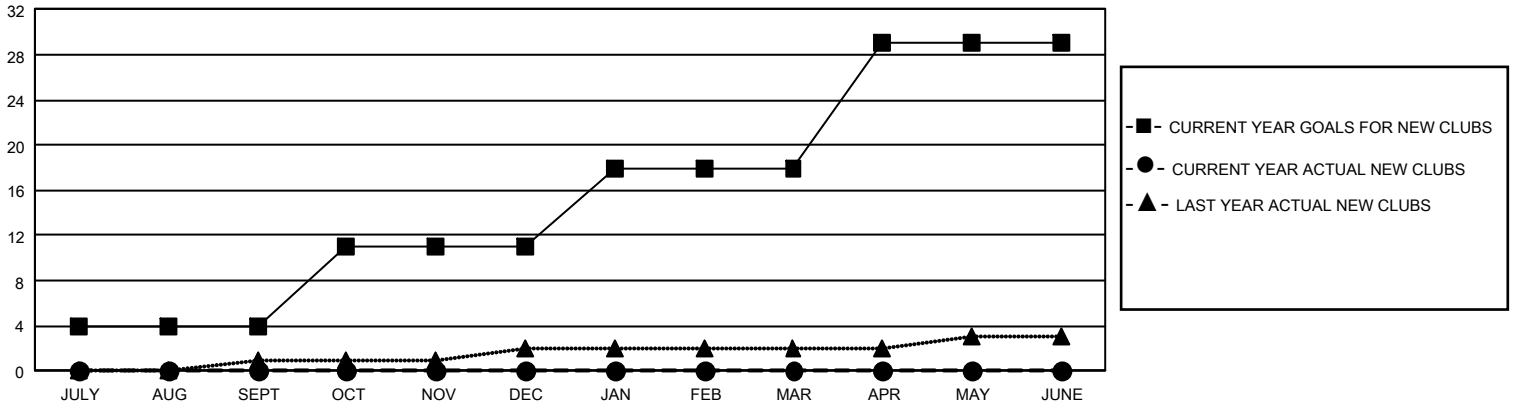
GMT Constitutional Area 1, Group E

REPORT DOES NOT INCLUDE CLUBS IN UNDISTRICTED AREAS.

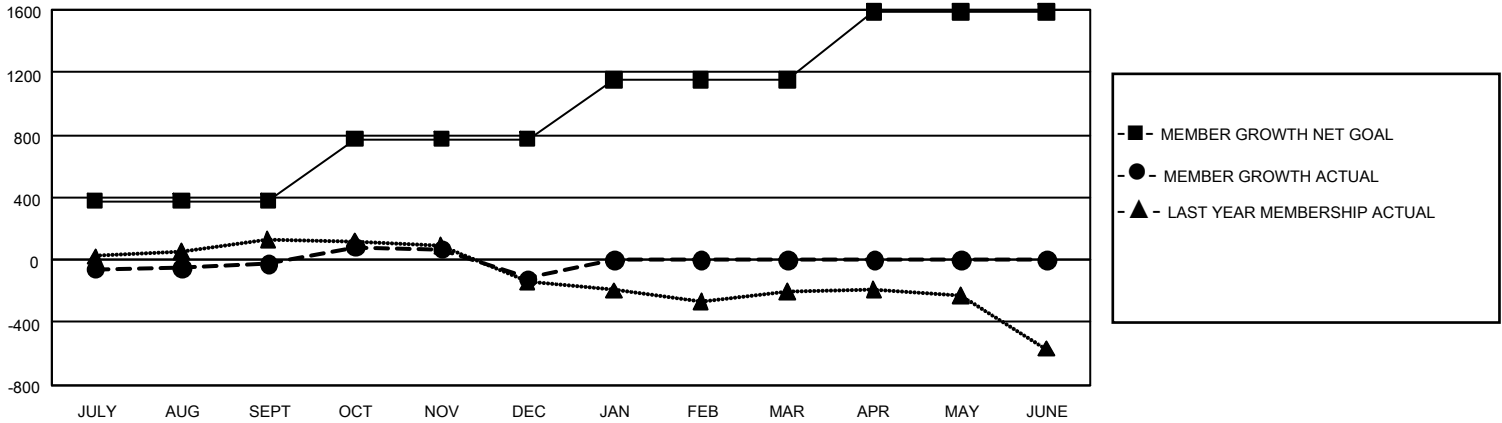
Clubs			
RESULTS FOR 2022-2023			
QUARTER	NEW CLUB GOAL	NEW CLUBS	DROPPED CLUBS
JULY/AUG/SEPT	12	0	5
OCT/NOV/DEC	21	0	2
JAN/FEB/MAR	21	0	0
APR/MAY/JUNE	33	0	0

Members			
RESULTS FOR 2022-2023			
QUARTER	MEMBER GROWTH NET GOAL	MEMBER GROWTH ACTUAL	DROPPED MEMBERS ACTUAL (including transfers)
JULY/AUG/SEPT	378	777	711
OCT/NOV/DEC	397	738	774
JAN/FEB/MAR	375	0	0
APR/MAY/JUNE	435	0	0

GOALS AND ACTUAL NEW CLUBS CUMULATIVE



GOALS AND ACTUAL MEMBERS CUMULATIVE



DROPPED CLUBS: 7	462 CLUBS OF 1,002 ADDED 1 OR MORE NEW MEMBERS	GENDER DISTRIBUTION	
		MALE 21,662 (71.40%) FEMALE 8,672 (28.58%) NON BINARY 0 (0.00%) PREFER NOT TO ANSWER 4 (0.01%)	
DROPPED MEMBERS		CLICK HERE FOR CUMULATIVE MEMBERSHIP DATA	TOTAL FAMILY UNIT MEMBERS 5,439
DECEASED 204 CLUB CANCELLED 45 OTHER 1,243 TOTAL 1,492	FAMILY MEMBERS PAYING HALF DUES 2,776		